

KRONOS

One clamp for all applications

Inspiring Innovations.

KRONOS by ONLEVEL, the first adjustable clamp ever. While developing this clamp, apart from the price, we always also had efficiency in mind. Creativity and innovation can only work if they go hand in hand with enthusiasm - on all levels: aesthetic design, efficient products and simple installation.

All relevant glass thicknesses instantly adjustable:

Step	Glass Thickness
1	8 mm
2	4/4/2 (8.76 mm)
3	10 mm
4	5/5/2 (10.76 mm)
5	12 mm
6	6/6/2 (12.76 mm)

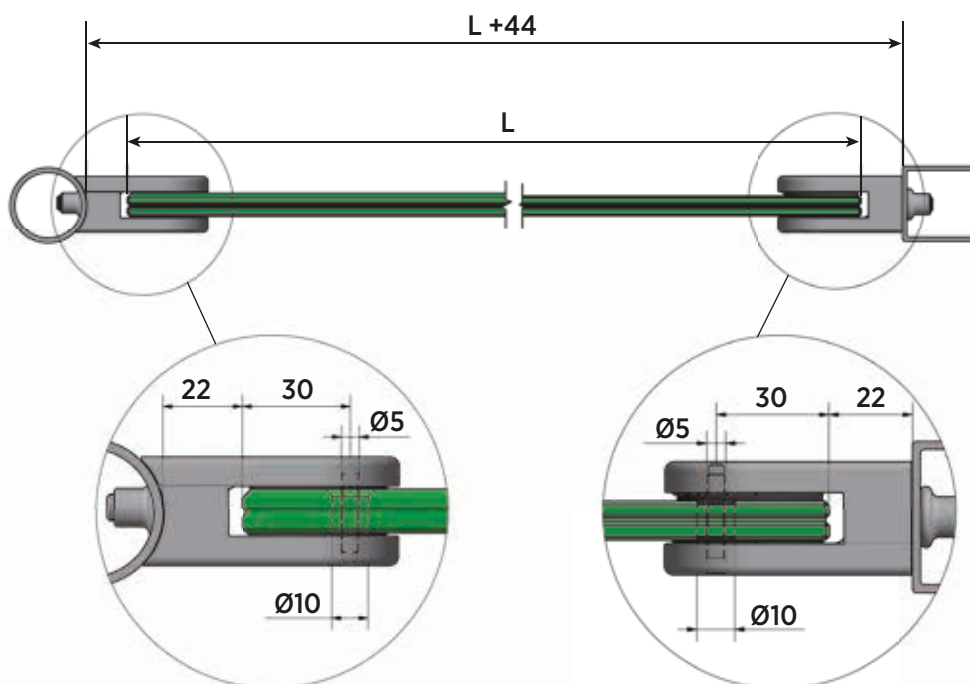


Essential Features

- | All relevant glass thicknesses: from 8 mm tempered glass up to 12.76 mm laminated safety glass - instantly adjustable
- | All relevant post connections - flat back and 42 mm, 48 mm post (round)
- | Considerably reduced inventory
- | Considerably reduced technical support
- | Unsurpassed quality - no unexpected widening and loosening of the grip - guaranteed
- | Concealed screws - simply attach the desired cover - clean appearance from both sides
- | Simple installation - no longer do you require fiddly assembly of single components
- | Finish will be 100% identical to post or to the entire project, whatever the colour
- | Made in Germany- timeless precision and quality

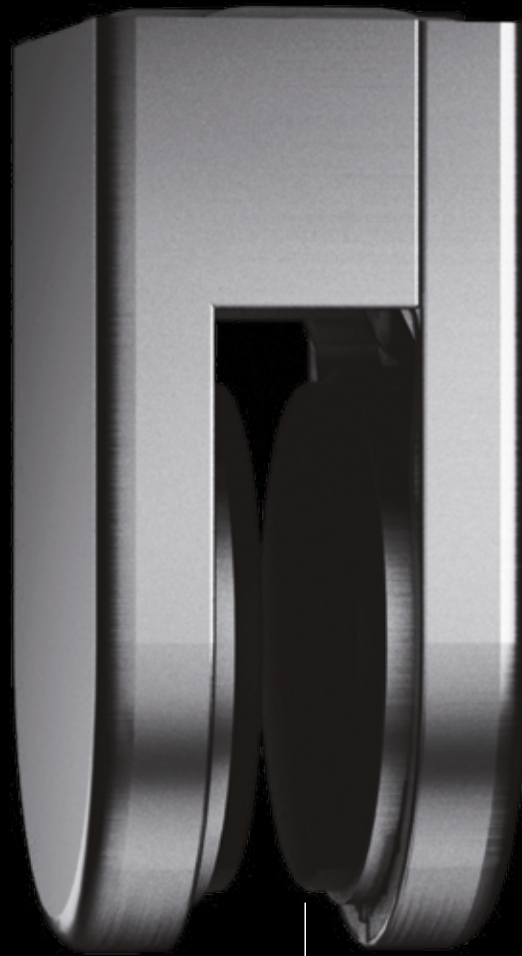


Kronos glass dimensions





A clamp made from one piece –
no assembly of single components



Concealed screws – simply
attach the desired cover

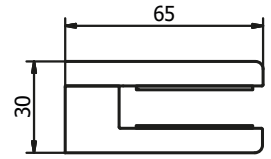
One clamp for all glass thicknesses
– from 8 mm tempered glass up to
12.76 mm laminated safety glass



Kronos, V4A



| Length: 65 mm
| Height: 45 mm
| Sales unit: 4 pieces

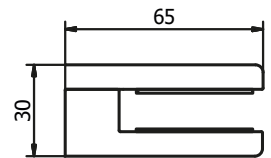


Connection	flat	Ø 42.4 mm	Ø 48.3 mm
	Art. no.	Art. no.	Art. no.
	12.5500.000.31	12.5500.420.31	12.5500.480.31

Kronos, galvanised steel



| Length: 65 mm
| Height: 45 mm
| Sales unit: 4 pieces

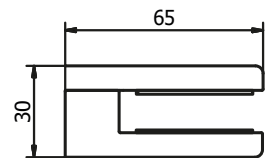


Connection	flat	Ø 42.4 mm	Ø 48.3 mm
	Art. no.	Art. no.	Art. no.
	12.5500.000.81	12.5500.420.81	12.5500.480.81

Kronos, RAL



| Length: 65 mm
| Height: 45 mm
| Sales unit: 4 pieces



Connection	flat	Ø 42.4 mm	Ø 48.3 mm
RAL	Art. no.	Art. no.	Art. no.
glossy	12.5500.000.83	12.5500.420.83	12.5500.480.83
structured matt	12.5500.000.86	12.5500.420.86	12.5500.480.86
matt	12.5500.000.88	12.5500.420.88	12.5500.480.88

Kronos Cover Cap, Stainless Steel V4A



| Length: 65 mm
| Height: 45 mm
| Sales unit: 4 pieces

Connection	flat	Ø 42.4 mm	Ø 48.3 mm
	Art. no.	Art. no.	Art. no.
	12.5502.000.31	12.5502.420.31	12.5502.480.31

Kronos Cover Cap, zinc-plated steel



| Length: 65 mm
| Height: 45 mm
| Sales unit: 4 pieces

Connection	flat	Ø 42.4 mm	Ø 48.3 mm
	Art. no.	Art. no.	Art. no.
	12.5502.000.81	12.5502.420.81	12.5502.480.81

Kronos cover cap RAL



| Length: 65 mm
| Height: 45 mm
| Sales unit: 4 pieces

Connection	flat	Ø 42.4 mm	Ø 48.3 mm
RAL	Art. no.	Art. no.	Art. no.
glossy	12.5502.000.83	12.5502.420.83	12.5502.480.83
structured matt	12.5502.000.86	12.5502.420.86	12.5502.480.86
matt	12.5502.000.88	12.5502.420.88	12.5502.480.88

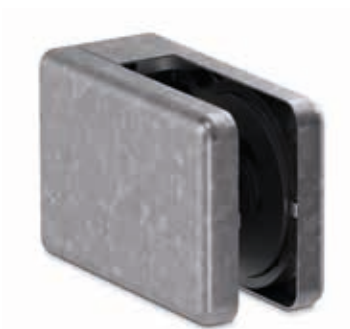
Kronos, V4A



| Length: 65 mm
| Height: 45 mm
| Sales unit: 4 pieces

Connection	flat	Ø 42.4 mm	Ø 48.3 mm
	Art. no.	Art. no.	Art. no.
	12.5510.000.31	12.5510.420.31	12.5510.480.31

Kronos, galvanised steel



| Length: 65 mm
| Height: 45 mm
| Sales unit: 4 pieces

Connection	flat	Ø 42.4 mm	Ø 48.3 mm
	Art. no.	Art. no.	Art. no.
	12.5510.000.81	12.5510.420.81	12.5510.480.81

Kronos, RAL



| Length: 65 mm
| Height: 45 mm
| Sales unit: 4 pieces

Connection	flat	Ø 42.4 mm	Ø 48.3 mm
RAL	Art. no.	Art. no.	Art. no.
glossy	12.5510.000.83	12.5510.420.83	12.5510.480.83
structured matt	12.5510.000.86	12.5510.420.86	12.5510.480.86
matt	12.5510.000.88	12.5510.420.88	12.5510.480.88

Kronos Cover Cap, Stainless Steel V4A



| Length: 65 mm
| Height: 45 mm
| Sales unit: 4 pieces

Connection	flat	Ø 42.4 mm	Ø 48.3 mm
	Art. no.	Art. no.	Art. no.
	12.5512.000.31	12.5512.420.31	12.5512.480.31

Kronos Cover Cap, zinc-plated steel



| Length: 65 mm
| Height: 45 mm
| Sales unit: 4 pieces

Connection	flat	Ø 42.4 mm	Ø 48.3 mm
	Art. no.	Art. no.	Art. no.
	12.5512.000.81	12.5512.420.81	12.5512.480.81

Kronos cover cap RAL



| Length: 65 mm
| Height: 45 mm
| Sales unit: 4 pieces

Connection	flat	Ø 42.4 mm	Ø 48.3 mm
RAL	Art. no.	Art. no.	Art. no.
glossy	12.5512.000.83	12.5512.420.83	12.5512.480.83
structured matt	12.5512.000.86	12.5512.420.86	12.5512.480.86
matt	12.5512.000.88	12.5512.420.88	12.5512.480.88

Kronos Inner Section without Cover Cap



- | Length: 65 mm
- | Height: 45 mm
- | Material: Steel/nickel, zinc-plated
- | Sales unit: 4 pieces

Connection	flat	Ø 42.4 mm	Ø 48.3 mm
	Art. no.	Art. no.	Art. no.
	12.5501.000.82	12.5501.420.82	12.5501.480.82

Kronos glass support, lateral



Will you mount Kronos all by yourself?
These glass supports offer a 100% slip protection without drill holes in the glass. The glass is perfectly held in place by these supports.

- | left and right each
- | Sales unit: 4 pieces

Model 7055	
	Art. no.
	90.7055.010.41



Kronos glass support for floor glass clamp



Would you like to use the Kronos glass clamp as a floor clamp?
No problem – with the aid of the glass support, the clamp is simply repurposed.

- | Sales unit: 4 pieces

Model 7055	
	Art. no.
	90.7055.020.41

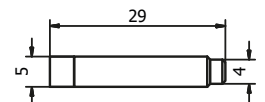


Kronos lock pin



Lock pins must be used for pre-wall installation.
They secure the glass against slipping. The locking pin can be used later when the clamp is already closed.

- | Sales unit: 4 pieces



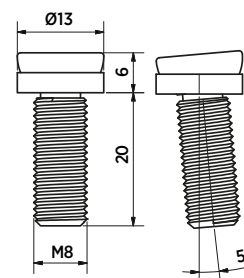
Model 5000	
	Art. no.
	92.5000.029.30

Kronos, adjustable screw M8 x 20 mm



You haven't drilled straight into the post? No problem. Our adjustable screw can easily make up for small differences.

- | Finish exterior application: V4A (exterior)
- | Sales unit: 12 pieces



Model 1050	AISI 316 (exterior)
Art. no.	
91.1050.820.30	

Kronos mounting tool



| Sales unit: 1 piece

Model 0100	
Art. no.	
90.0100.150.00	

Kronos setting tool

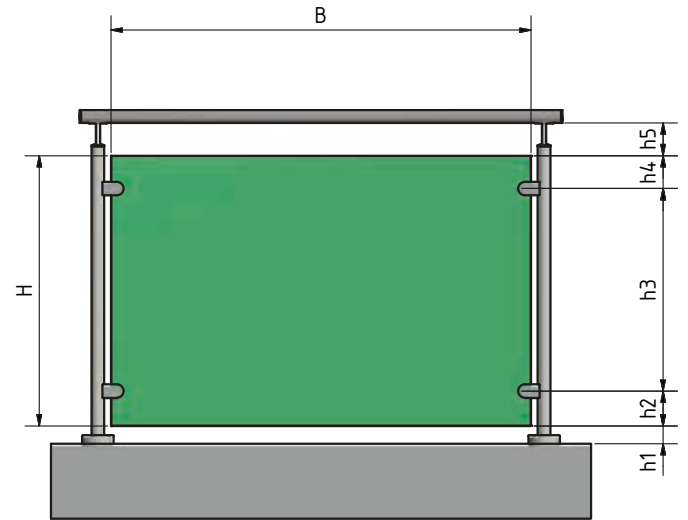
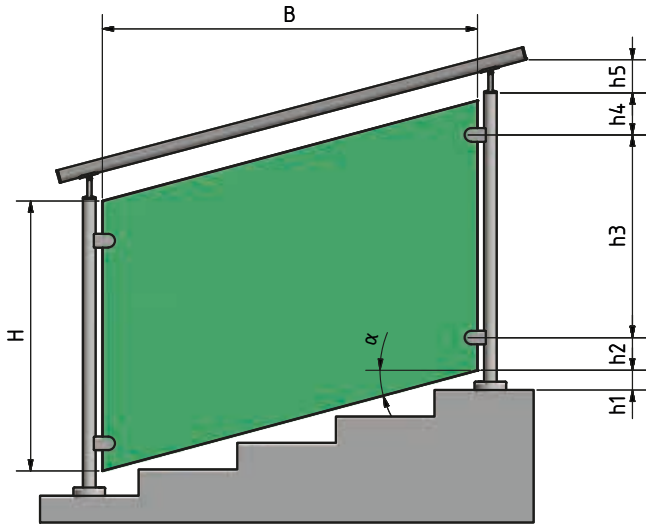


| Sales unit: 1 piece

Model 0100	
Art. no.	
90.0100.155.00	

Installation situation A - without lock pin

Installation situation A describes the use of clamps without lock pin. The glazing is realised with the aid of clamps and posts which are mounted on top of the base plate.



Designation	Meaning	Min. dimension [mm]	Max. dimension [mm]
H	Glass height	800	1100
B	Glass width	500	1600
h1	Floor upper edge - glass edge at bottom	10	120
h2	Glass edge at bottom - clamp centre axis at bottom	100	250
h3	Distance between clamps	500	700
h4	Glass edge on top - clamp centre axis on top	100	250
h5	Distance to glass edge on top - handrail	10-30	
α	Angle to horizontal line	0°	41°

